

Power Systems & Controls

Series GSR -- Voltage Regulator



The most economical power conditioning available, The Series GSR provides voltage sensitive load equipment with conditioned power that has been filtered for noise and adjusted for voltage. On a 480 volt system a 240 volt swing on the input (+20% - 30%) will show up as

less than a 50 volt (+5%, -6%) change at the load.

The Series GSR uses solid state switches to select between 7 possible taps on the triple shielded isolation transformer. This switching takes place in less than a cycle. The system also provides protection from transient voltage spikes. The Series GSR comes complete with a regulator bypass or system bypass switch for maintenance work.

Standard Equipment Features

- Transformer:
 - Fully Isolated
 - 100% Copper windings
 - Triple shielded
 - K-13 Rated (100% Non Linear Load)
 - Low output impedance
 - Grain orientated, M-6 grade silicon steel
 - Class (N) 200 insulation
- Main input breaker with shunt trip
- High Common mode noise attenuation
- Output transient suppression
- Timed automatic restart - programmable
- Programmable Limits for:
 - Input Voltage
 - Input Frequency
- Over/Under frequency protection
- Over/Under output voltage protection
- Fuse failure indicator lights
- Digital Input & output meters
- Overload protection
- Highly Efficiency design
- Quiet Operation
- Extremely high surge capability

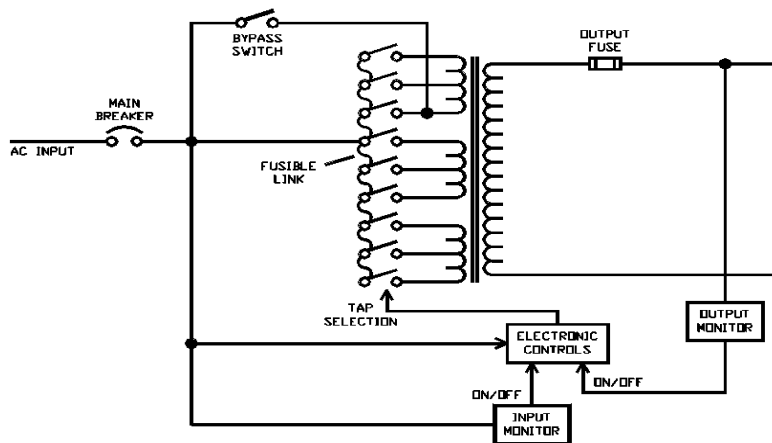
Optional Features

- Remote Monitoring
- Communications capability
 - RS232 or RS485
 - Ethernet TCP / IP
 - Modbus Plus
 - Modbus RTU / ASCII
 - DNP 3.0
- K-Factor and %THD
- Maintenance bypass
- Remote power off (REPO)
- Various Cabling and Distribution combination on some models
- Pre-coordinated input TVSS
- "Turn Key" Installation

System Specifications

INPUT					OUTPUT	
Nominal Voltage Available					Nominal Voltage Available	
➤ @ 60 Hz		*208, *240, 480, 600			➤ @ 60 Hz	
➤ @ 50 Hz		380, 400, 415			➤ @ 50 Hz	
➤ Phase		3 Phase 3 Wire + Ground			➤ Phase	
➤ Frequency Tolerance		+/-3 Hz			➤ Frequency Regulation	
➤ Voltage regulation range		+20%, -30% from nominal			➤ Output Impedance	
					➤ Line Voltage Reg.	
					➤ NL to FL	
					➤ Combined Line & Load Regulation	
					➤ Response Time	
					➤ Coorection Time	
					➤ Over Shoot	
					➤ Efficiency	
					Noise Attenuation	
					➤ Common Mode	
					➤ Transverse Mode	
					THD (Total Harmonic Distortion)	
					➤ Total	
					Phase Separation	
					➤ Balanced Load	
					➤ 25% Unbalance	
					Overload Capacity	
					➤ 100% Rating	
					➤ 200%	
					➤ 500%	
					➤ 1000%	
					➤ Load Power Factor	
					ENVIRONMENT	
					➤ Temperature	
					➤ Altitude	
					➤ Humidity	
					➤ Noise Level	
					225-500 < 60 dBa	
					625-1000 < 65dBa	

SERIES GSR RATINGS, DIMENSIONS & WEIGHTS				
KVA RATING	W (IN)	L (IN)	H (IN)	W (LBS)
10	21.5	29	30	440
15	21.5	29	30	595
25	45	29	44	840
30	45	29	44	900
45	45	29	44	1140
50	45	29	44	1165
75	45	29	44	1320
100	45	29	44	1992
125	56	41.5	77	2376
150	56	41.5	77	2640
175	56	41.5	77	2750
225	56	41.5	77	3300
250	56	41.5	77	4000
300	56	41.5	77	4800
350	56	41.5	77	5520
400	72.5	48.5	77	5900
500	72.5	48.5	77	6200
625	110	48	87	8000
750	134	48	87	9000
1000	134	48	87	10,000



Power Systems & Controls reserves the right to improve, enhance and modify the features and specifications of its products and services without prior notification.

POWER SYSTEMS
& CONTROLS
 THE POWER IS ON!