

# SERIES LPP

# 2.4kVA Power Module

The **Series LPP** was developed as “Portable Power” for the secure community of the USG. This “harsh environment” unit has been designed in support of the “mission critical” customer for the immediate deployment efforts around the world. These units support the tactical deployment teams in the most remote locations, where the power is either poor or nonexistent. The Series LPP will accept voltage variations from 200 to 230VAC and frequency ranging from 30 to 70Hz to make it the perfect “fix” for power problems experienced in remote location throughout the world. The module takes that bad power and delivers clean, isolated 120VAC power at the standard frequency of 50 or 60 Hz via three easy access, side mounted hospital grade duplex outlets and isolated ground studs. Standard load protection systems include voltage surge suppression (TVSS), a high frequency output filter and a built in UPS with 7 minutes of full load backup power. PS&C also equips the Series LPP with the capability of “Hot Start” directly from it’s internal battery in order to give the user a few minutes of power when no source is available.



## Standard Equipment Features

- Full Output Isolation
- All welded construction
- Vibration stabilization under all individual components
- 230 volt transient voltage surge suppression on the input - with visual indicators
- Over/under output voltage protection
- Electrostatic Isolation
- Recessed input, output and ground
- Battery temperature monitoring
- Wide input range
- Auto restart
- Air conditioning not required
- Overload protection
- Portable
- ANSI 61 gray or black

## Design Standards

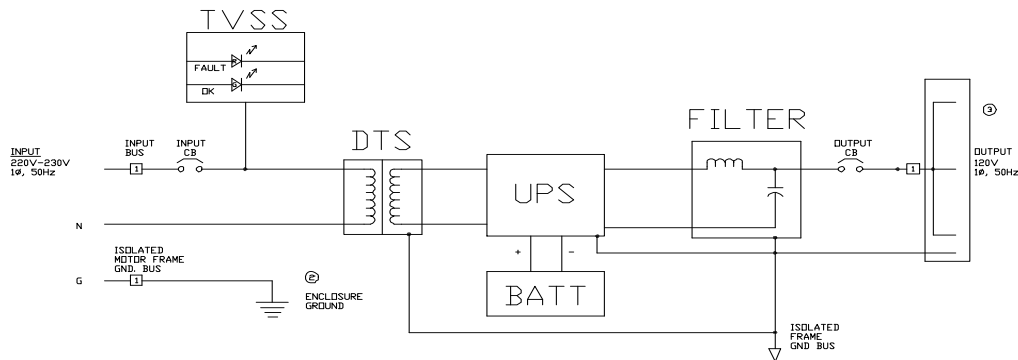
- TVSS on the Input (UL 1449)
- Isolation transformer (DTS Specification)
- IGBT/IGBT Double Conversion (UL 1778)
- ASTM B545-97 (Filter Construction)
- MIL-STD-220A (Filter Design)
- MIL-F-15733 (Filter Protection)
- Input THD filter -- meets IEEE 519
- UL 1283
- Grounding separation features



**POWER SYSTEMS**  
**& CONTROLS**  
THE POWER IS ON!

# System Specifications

INPUT					OUTPUT		
Nominal Voltage Available					Nominal Voltage Available		
➤ @ 60 Hz		120, 208, 240			➤ @ 60 Hz		120 Single phase
➤ @ 50 Hz		120, 208, 230			➤ @ 50 Hz		120 Single phase
* Standard Build-UP 120 Single Phase							
Phase					Regulation		
Single Phase with Safety Gnd. and Divorced Gnd.					➤ Frequency Regulation		+/- .5%
Frequency Tolerance					➤ Voltage Regulation		+/- 3%
30-70Hz					Output Current (RMS)		
Case and Factor					➤ 20 Amps		
2.5 @ Full Load					Overload Capacity (Rating)		
Dimensions					100%	125%	150%
					Continuous	1 Minute	30 Seconds
KVA/	W (IN)	L (IN)	H (IN)	W (LBS)	Power Factor		
2.4	14	25	24	260	➤ .7		
Standards					<b>ENVIRONMENT</b>		
UL - 1778					➤ Temperature		0° -104° F (0° -40° C)
					➤ Altitude		0-2000 Meters
					➤ Humidity		30-90% Non-Condensing
					➤ Efficiency		86%



Power Systems & Controls reserves the right to improve, enhance and modify the features and specifications of its products and services without prior notification.

**POWER SYSTEMS**  
**& CONTROLS**  
**THE POWER IS ON!**